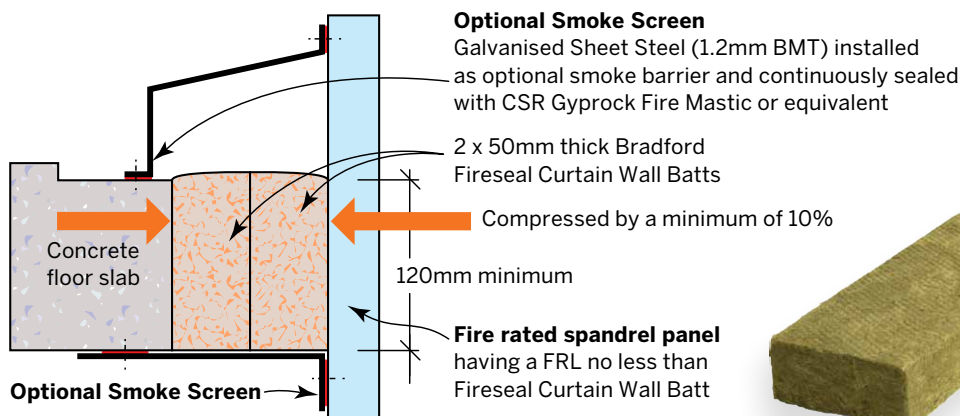


# Bradford Fireseal Curtain Wall Batt

**SEAL AGAINST FIRE BETWEEN FLOORS**

## Typical Curtain Wall Batt Installation



When installed, Fireseal Curtain Wall Batts act as a fire barrier, retarding the progress of fire, smoke and heat between floors of multi-storey buildings.

The product is designed to be installed between the edge of the concrete floor slab and a fire rated spandrel panel to provide floor to floor fire separation in multi-storey buildings. The Fireseal Curtain Wall Batt will match the FRL of the fire rated spandrel panel of up to 120 minutes. Optional galvanised steel flashings are then installed both below and above the curtain wall batt sealed to the wall and the concrete with fire rated sealant.

- A recent 1530.4 test carried out enables Bradford Insulation to provide a curtain wall batt solution for various opening widths with a 120mm minimum slab thickness.
- The Fireseal Curtain Wall Batt is installed in 50mm thick layers offering up to 120 minutes
- Batts are abutted to neighbouring pieces to provide a tight compressed fit to the joint

NO. OF BATTS	MIN DEPTH OF SLAB (mm)	COMPRESSED THICKNESS OF FIRESEAL CURTAIN WALL BATT (mm)	FRL (mins)
1	120	45	-/120/120
2	120	90	-/120/120
3	120	135	-/120/90



# Mind The Gap!

Did you know that under Volume 1 Clause C2.6 of the BCA, any gaps behind a curtain wall must be packed with non-combustible material that will withstand thermal expansion and structural movement, without loss of seal against fire and smoke?

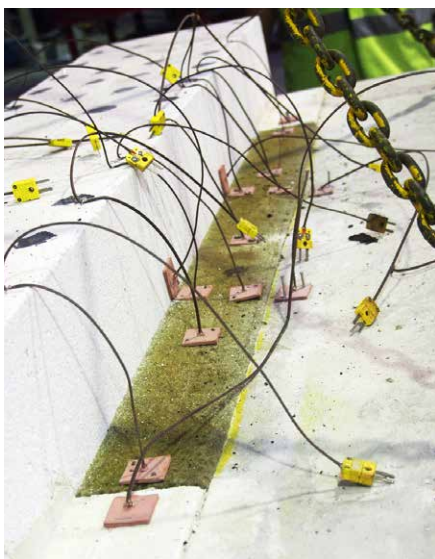
This is the clause covering vertical separation between external openings in external walls and is crucial to a proper understanding of fire barriers.

Remember! Compliance testing must be carried out to AS1530.4 and only products with compliance-test reports should be used in these applications.

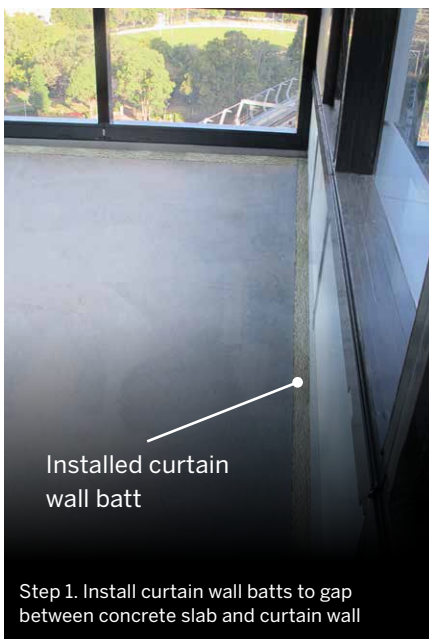
CSR Bradford systems incorporating various products can be tailored to meet the BCA requirements while also complying with AS1530.4. In most cases, a fire rating of up to 120 minutes is achievable.

## Product Details

LENGTH	WIDTH	THICKNESS	PIECES PER PACK	LINEAL METRES PER PACK	PRODUCT CODE
1200mm	120mm	50mm	18	21.6	125082



Curtain wall batt testing at Exova Warrington fire test facility in Dandenong, VIC



Installed curtain wall batt

Step 1. Install curtain wall batts to gap between concrete slab and curtain wall



Steel flashing installed over the curtain wall batt

Step 2. Install steel flashing over curtain wall batt continuously sealed with fire rated sealant

For more information call **1300 850 305** or visit [bradfordinsulation.com.au](http://bradfordinsulation.com.au)



### CSR Bradford

Locked Bag 1345 North Ryde BC NSW 1670  
Email: [bradfordenquiries@csr.com.au](mailto:bradfordenquiries@csr.com.au)

CSR Bradford is a business division of CSR Building Products Limited ABN 55 008 631 356

The contents of this brochure are copyright protected and may not be reproduced in any form without prior written consent of CSR Bradford. Recommendations and advice regarding the use of the products described in this brochure are to be taken as a guide only, and are given without liability on the part of the company or its employees. We reserve the right to change product specifications without prior notification, please refer to the CSR Bradford website for the latest revision of this document prior to use. The purchaser should independently determine the suitability of the product for the intended use and application.

