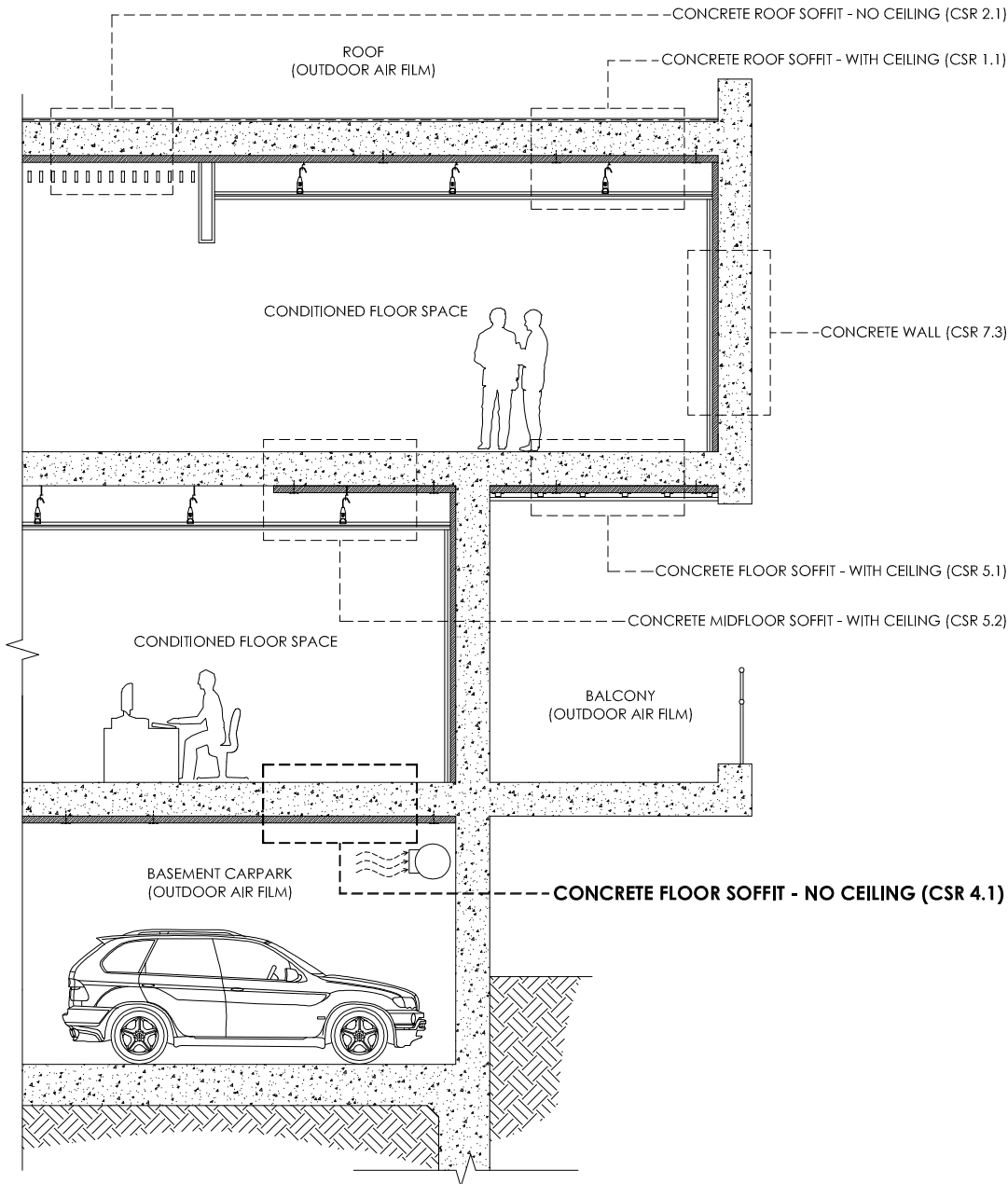
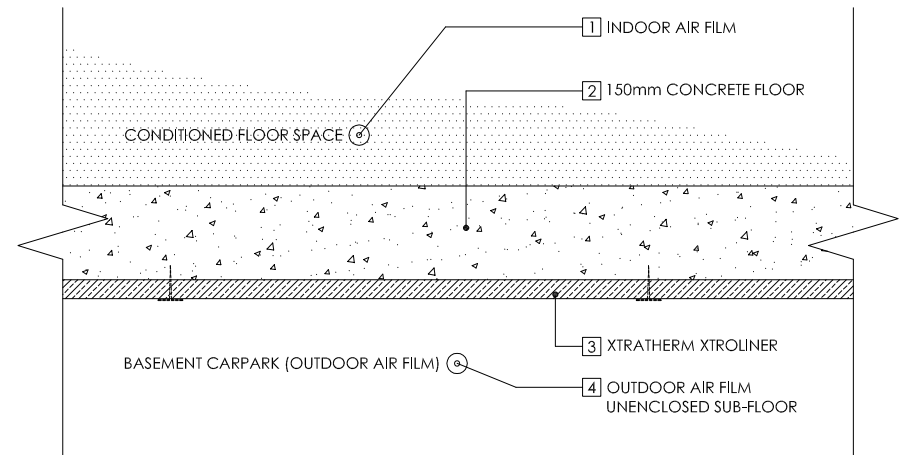


**APPLICATION INDEX - COMMERCIAL BUILDING**



**APPLICATION DETAIL: CONCRETE FLOOR SOFFIT - NO CEILING (CSR 4.1)**



**THERMAL CALCULATION: CONCRETE FLOOR SOFFIT - NO CEILING (CSR 4.1)**

PRODUCT	XTRATHERM XTROLINER		
	25mm	40mm	50mm
THICKNESS	<b>25mm</b>	<b>40mm</b>	<b>50mm</b>
PRODUCT NUMBER (STANDARD)	127318	130314	127332
PRODUCT NUMBER (DUO)	131886	131888	131889
1 INDOOR AIR FILM	0.160	0.160	0.160
2 150mm CONCRETE FLOOR	0.104	0.104	0.104
3 XTRATHERM XTROLINER MATERIAL R-VALUE	1.190	1.900	2.380
4 OUTDOOR AIR FILM VENTED OR UNENCLOSED SUB-FLOOR	0.080	0.080	0.080
<b>TOTAL R-VALUE (DOWNWARDS)</b>	<b>R. 1.53</b>	<b>R. 2.24</b>	<b>R. 2.72</b>

FOR UPWARDS HEAT FLOW RESULTS REFER TO THE FOLLOWING TABLE:

<b>TOTAL R-VALUE (UPWARDS)</b>	<b>R. 1.48</b>	<b>R. 2.19</b>	<b>R. 2.67</b>
--------------------------------	----------------	----------------	----------------

The Xtratherm products are manufactured and tested in conformance with Australian Standards 4859.1. The Total R-Value thermal performance for the application detailed above is in accordance with AS/NZS 4859.1. Calculation is through the insulation path only. The contribution of this product to a Total R-Value depends on the installation and environmental conditions. The information in this performance summary data sheet is believed to be true at the time of publication. CSR Bradford reserves the right to change specification without notice, and have no obligation or liability for persons misrepresenting or misusing this information in any manner whatsoever.

APPLICATION: **CONCRETE FLOOR SOFFIT - NO CEILING**

PRODUCT: **XTRATHERM XTROLINER**

DWG: **CSR 4.1**

TECHNICAL ASSISTANCE WEBSITE: [www.BradfordDesignSmart.com.au](http://www.BradfordDesignSmart.com.au)

TECHNICAL ASSISTANCE PHONE: **1800 354 044**

DATE: **MARCH 2018**