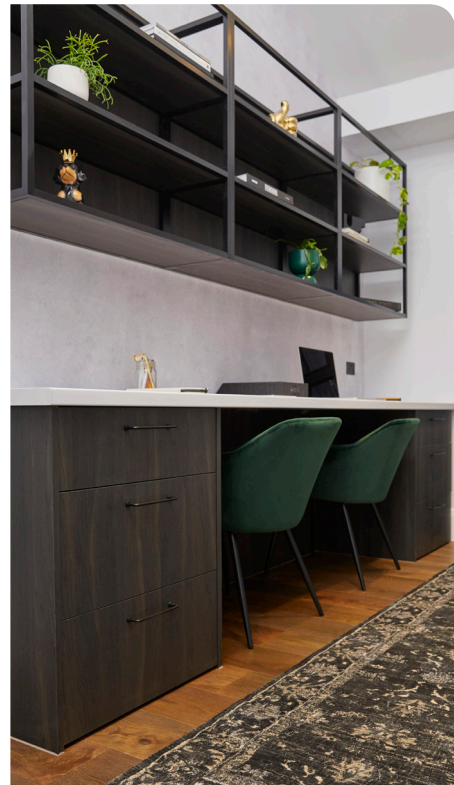


1940s



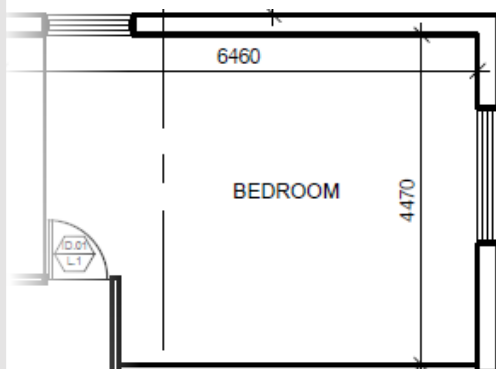
RECAP

While we love the sound of children playing, it can be an interruption when you are trying to work from home! Sarah & George created a winning recipe with a child's bedroom, study and powder room this week on The Block.

HIGHLIGHTS

Filled with natural light; the judges thought the study was spacious enough for two people to work comfortably.

The children's room was beautifully styled with a stunning versatile wallpaper, automated blinds and a teepee.



PRODUCT IN FOCUS

Sarah & George used Bradford SoundScreen R2.5 in the internal walls and midfloors of this home to reduce sound transmission between rooms and floors, for a more comfortable and harmonious home. For more info, visit [SoundScreen.com.au](https://www.soundscreen.com.au)



AVAILABLE
AT MITRE 10

CSR

Second Storey Renovation Checklist

WALLS

- External Walls ☐
- Bradford Gold Hi-Performance Insulation ☐
- Internal Walls ☐
- Bradford SoundScreen Acoustic Insulation ☐
- Gyprock Superchek™ Plasterboard ☐

CEILINGS

- Bradford Gold Hi-Performance Insulation ☐
- Gyprock Supaceil™ Plasterboard ☐

MIDFLOORS

- Bradford SoundScreen Acoustic Insulation ☐

DECOR

- Concrete Wallpaper "Stucco Veneziano" ☐
- Kylie Dining Chair - Emerald Velvet | CLU Living ☐
- Giant Eucalypt - Grey - Wallpaper ☐
- Cattywampus Kids Teepee Tent ☐
- Defined Charm | Wool Carpet | Carpet Court ☐