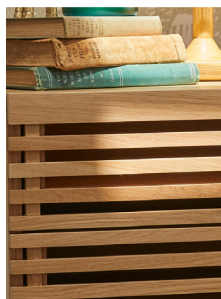
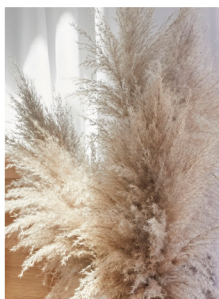
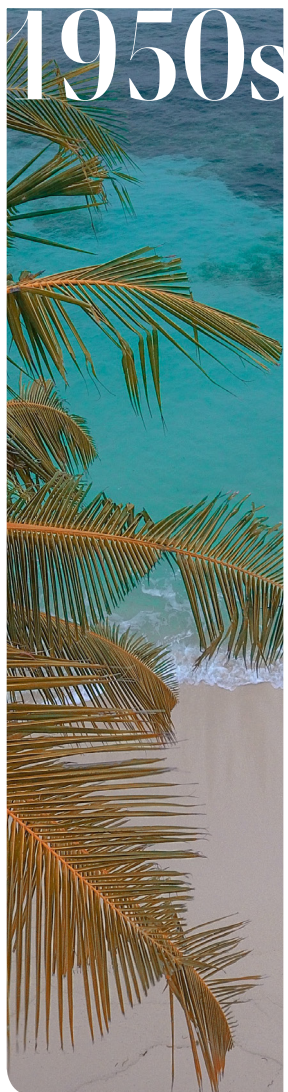


# 1950s

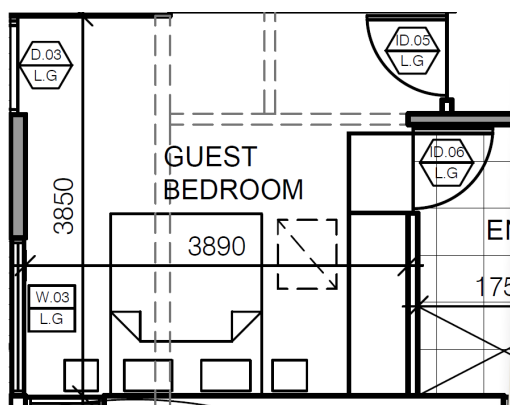


## RECAP

This week, Jimmy and Tam created an oasis of natural light, using the high ceilings in their room to capture 1950s styling in a fresh, contemporary way; highlighting the space using a wall-to-ceiling wallpaper feature.

## TIP OF THE WEEK

Wallpaper in damask and floral patterns was a popular décor choice and often used in different areas of homes in the 50s. Scandi-style furniture and pine wood detailing was also embraced for its modern, minimalist vibe.



## Guest Bedroom Renovation Checklist

### WALLS

- Bradford Gold Hi-Performance Insulation ☐
- Bradford SoundScreen Acoustic Insulation ☐
- Gyprock Superchek ☐
- Graphico Wallpaper ☐

### CEILINGS

- Bradford Gold Hi-Performance Insulation ☐
- Gyprock Superceiling ☐
- Velux Skylights ☐

### FLOORS

- Bradford Optimo Underfloor Insulation ☐

### FURNISHINGS

- Brushed gold edge mirror ☐
- Curtains ☐

## PRODUCT IN FOCUS

Jimmy and Tam used Bradford Optimo underfloor insulation in their guest bedroom to ensure minimal draught entry and an overall warm and comfortable space. For more info, visit [bradfordinsulation.com.au/optimo](http://bradfordinsulation.com.au/optimo)



AVAILABLE  
AT MITRE 10

CSR