

Tape Application

Bradford ULTRAtape

NOTE: This Installation Guide is applicable only for use with the products listed below when installed in the applications included in this Installation Guide for use in Australia. Installation details shown in this guide provide general guidelines only and alternative installation methods may be used to install these products where available. For applications and install details not covered in this guide, please contact your Bradford representative.

Applicable Products

- Bradford ULTRAtape

For more information on this product, please refer to applicable Product Technical Statement (PTS) found on the Bradford website.

Applications

- Pressure sensitive adhesive tape designed for use with pliable building membranes such as the Bradford Enviroseal and Thermoseal ranges of wall wrap and roof sarking products.
- Suitable for sealing overlaps, joints, and penetrations, as well as repairing pliable building membranes.
- It may also be used on concrete, steel, aluminium, timber, and window flashings where the material is sufficiently smooth.

Required Installation Items

- Tape Applicator e.g. Tape squeegee or roller.
- Knife, scissors or sharp edge for cutting tape.

Storage and Maintenance

- Store in the original packaging in a cool, dry area, away from UV light (direct sunlight). Storage life is 2 years when kept dry, in the original packaging and between 15 to 35°C.
- Do not pressure clean or use mineral-based cleaners or strong acids on this product.

General Guidance

- **Important:** Adhesive tape is not a substitute for mechanical fixings and is only suitable for sealing membrane tears, joints, overlaps, and seal to adjacent construction elements. Tape should be applied to membranes that are not under mechanical load, and which are supported by mechanical fixings to prevent loads stressing the tape bond.
- The bond strength of this tape increases over time so it is important to apply firm, even pressure during application and then allow the tape to cure over time without mechanical load applied.
- All surfaces must be clean, dry, and free from any residue that may inhibit adhesion.
- Tape application temperature range is between +5 to +40 °C. Damp or cold surfaces are

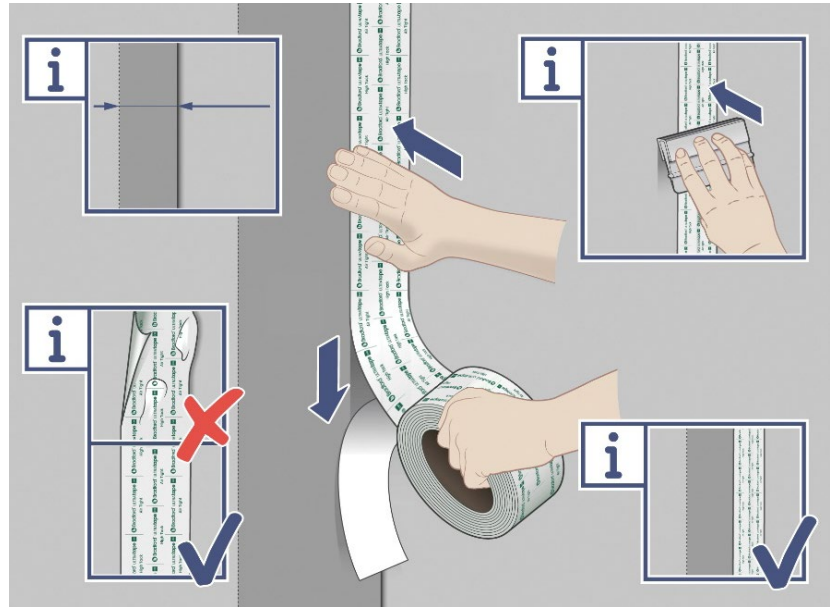
difficult to adhere to and may compromise the bond strength – allow to dry prior to application.

- Cleaning of the surface (if required) with an acetone, 100% isopropyl alcohol or degreasing agent is recommended, if compatible with the surface material – always check a small area prior to use to ensure it is suitable.
- Cut with a knife or scissors for a clean finish or tear by hand by quickly applying force across the width of the tape.
- Always apply firm pressure over the entire tape surface in numerous directions during application, ideally using a tape applicator such as a plastic squeegee or small diameter rubber roller.
- This product is suitable for use on the interior and exterior side of the building frame.
- Always follow the installation instructions in AS 4200.2. For inclusion in BAL (Bushfire Attack Level) classified buildings, additionally adhere to the installation requirements of AS 3959.
- Bradford ULTRAtape may also be suitable for use with concrete, steel, aluminium, timber, and window flashing where the material is sufficiently smooth and free of residue that may inhibit adhesion – always test the adhesion properties of the tape on the material prior, allowing 24hrs curing before deciding to use it.
- This product is not designed to withstand prolonged, direct exposure to the elements – accordingly, it should not be left exposed, and the exterior cladding should be installed without delay. Products exposed to harsh weather conditions, or for more than 6 weeks should be inspected for damage prior to installation of the exterior cladding. Damaged product should be repaired or replaced to comply with the product warranty.

Installation Instructions

Sealing Overlaps

1. A minimum 50mm membrane overlap which is taped is required to comply with AS4200:2 when sealing pliable building membranes.
2. It is important to align the tape equally between each half of the membrane forming the overlap – i.e. 30mm of tape width on each piece of membrane.
3. Apply firm pressure over the entire tape surface in numerous directions during application, ideally using a tape applicator such as a plastic squeegee or small diameter rubber roller.



Important: The joint should not be under mechanical load – the membrane must be otherwise secured to the frame with suitable staples or fasteners.

Note:

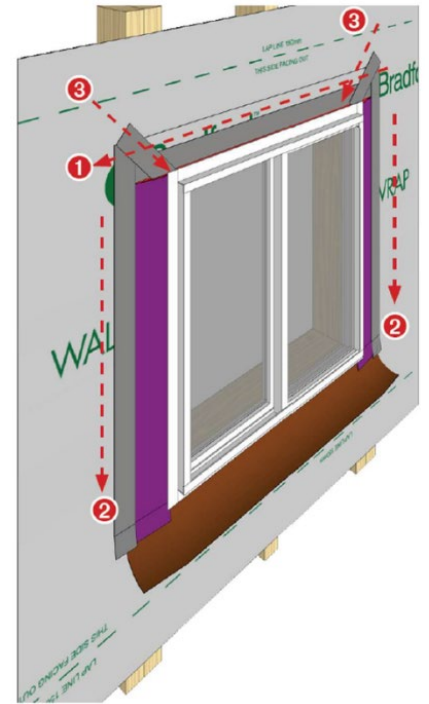
– It is recommended that horizontal overlaps are sealed before vertical overlaps. Where possible, position joints over framing members to provide support. Vertical overlaps should ideally be over a stud to provide support for the joint. Tape starting from the top to the bottom, applying pressure to the tape as it is installed, ideally using a tape applicator.

– If there is no framing behind the overlap, it is recommended that a second installer provide temporary support from inside the building while the tape is applied from the outside.

Window Sealing

Installation of wall wraps at window openings should be in accordance with AS4200.2. For a range of installation options on the preparation and taping of window openings, refer to the following document on the www.bradfordinsulation.com.au website:

- Bradford Wall Wrap Window Penetrations Install Guide

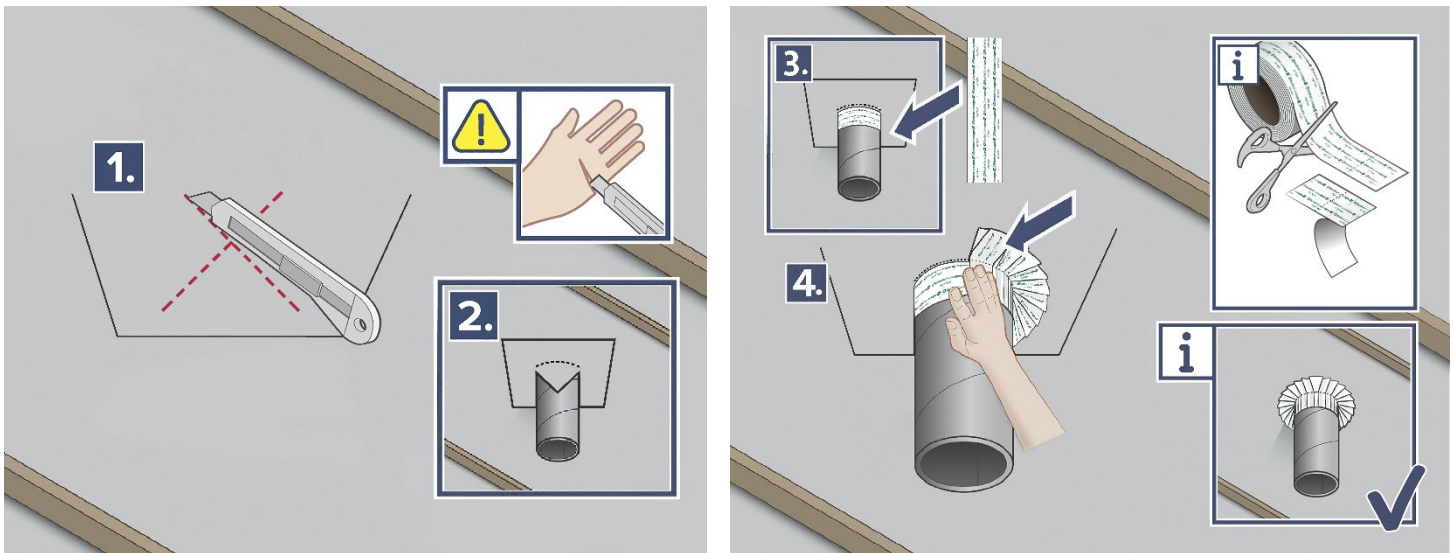


Penetration Sealing

Membranes installed for water, thermal, air & vapour control should be sealed around penetrations, except hot flues which should be installed with a 50mm space away from any hot surface. Where possible, use a grommet or gasket neatly fitted to seal the penetration. Then apply tape as a secondary sealant.

Where a grommet is not available, for circular penetrations follow these instructions:

1. Cut a diagonal cross in the membrane no bigger than the penetration in each direction.
2. Feed the penetration through and allow as much membrane as possible to cover the penetration surface.
3. Tape around the penetration to secure the membrane to the penetration ensuring a good seal.
4. Use small sections of tape to seal the penetration to the membrane. Apply pressure to ensure a good seal.



For rectangular penetrations, follow these instructions:

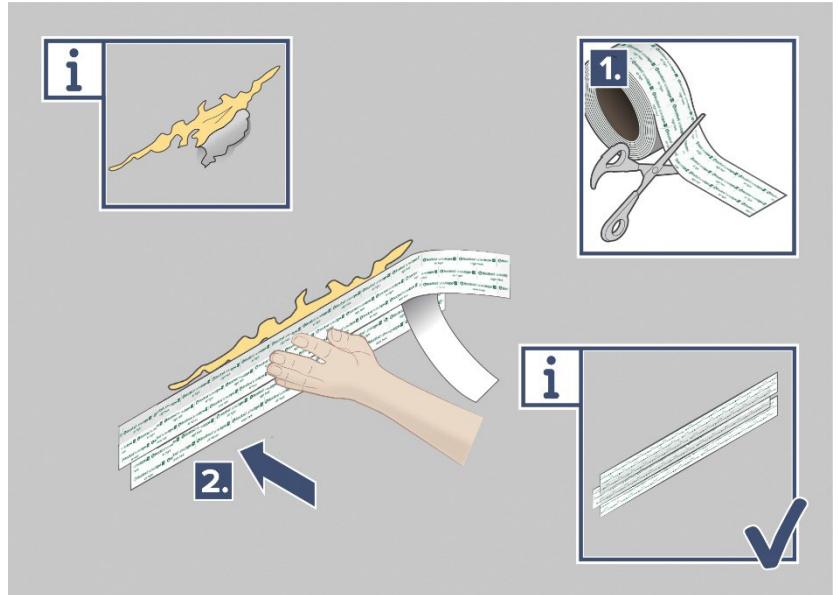
1. Cut the membrane to accommodate the shape, ideally as close as possible to the shape of the penetration.
2. Feed the penetration through and allow as much membrane as possible to cover the penetration surface.
3. Follow steps 3 & 4 from above.

Penetrations should be supported by the structure, not just the membrane.

Cuts, Tears and Repairs

Where cuts and tears are small, tape can be used to repair the membrane to maintain the water, vapour or air barrier properties of the membrane.

1. Measure the length of damage to be repaired and then cut multiple lengths of tape 40mm longer than the damaged section.
2. Working from the bottom up, start applying tape 20mm before the damaged area. Apply pressure to the tape to ensure a good seal. Apply the second piece of tape overlapping the first by one third of the tape width. Continue applying lengths of tape until the tear is covered.



For larger damaged sections, use a patch of membrane material at least 20mm bigger than the hole on each side.

1. Cut multiple lengths of tape to cover the length and width of the membrane patch.
2. Apply a strip of tape to the end of the membrane patch and position the patch to cover the damaged area.
3. Secure the patch with remaining tape along all sides, applying pressure to ensure a good seal.

